

## Drop-In Drop-in refrigerated stainless steel surface (2 GN container capacity) with A overshelf

ITEM # \_\_\_\_\_

MODEL # \_\_\_\_\_

NAME # \_\_\_\_\_

SIS # \_\_\_\_\_

AIA # \_\_\_\_\_



341171 (D14C20)

Drop-in Refrigerated stainless steel Surface (2 GN container capacity) with one A type overshelf and LED light

### Short Form Specification

#### Item No. \_\_\_\_\_

Hydrocarbon refrigerant gas R290 for the lowest environmental impact (GWP=3) - CFC and HCFC free. Well in 304 AISI stainless steel with rounded corners to facilitate cleaning operations. The well is also equipped with a drain hole. Automatic defrosting guarantees evaporators clearance and efficient well cooling. High-density expanded polyurethane foam with cyclopentane guarantees excellent well insulation to reduce energy dispersion. The bottom is equipped with copper tubes to ensure proper cooling, with this system the air touches the cold surface and gets cooled. Pressed Stainless steel top 30mm deep with rounded edges and drain hole for easier cleaning. Stylish A type overshelf designed for extra increased visibility on the surface for charming food display. Overshelf equipped with LED lights.

### Main Features

- CB and CE certified by a third party notified body.
- Precise temperature control and setting at 0,1°C .
- As standard the product comes with digitally controlled thermostat which is in line of HACCP norms and provides visual alarm as a warning of the increasing or decreasing temperatures.
- Food introduced at the correct temperature maintains its core temperature according to Afnor Standards.
- Automatic defrosting guarantees evaporators clearance and efficient well cooling.
- Designed to serve the food on plates .
- Equipped with a drain hole to easily discharge top condensation.
- Stylish A type overshelf designed for extra increased visibility on the surface for charming food display.
- Overshelf equipped with LED lights.
- Designed to be positioned in flush installation providing improved cleanability and suitable for modern design installations.

### Construction

- Well bottom is inclined to facilitate water drainage.
- Well in 304 AISI stainless steel with rounded corners to facilitate cleaning operations. The well is also equipped with a drain hole.
- Electronic control with temperature display.
- IPx2 water protection.
- The bottom is equipped with copper tubes to ensure proper cooling, with this system the air touches the cold surface and gets cooled.
- Pressed Stainless steel top 30mm deep with rounded edges and drain hole for easier cleaning.
- Overshelf in complete AISI 304.

### Sustainability



- Hydrocarbon refrigerant gas R290 for the lowest environmental impact (GWP=3) - CFC and HCFC free.
- High-density expanded polyurethane

APPROVAL: \_\_\_\_\_

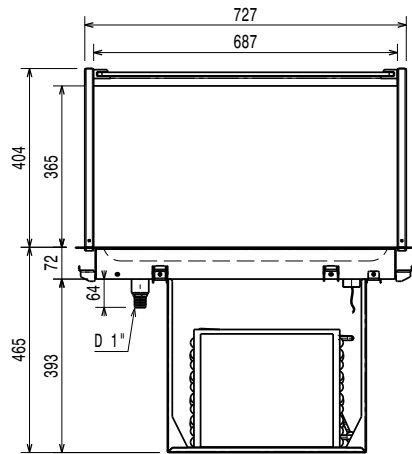
foam with cyclopentane guarantees excellent  
well insulation to reduce energy dispersion.



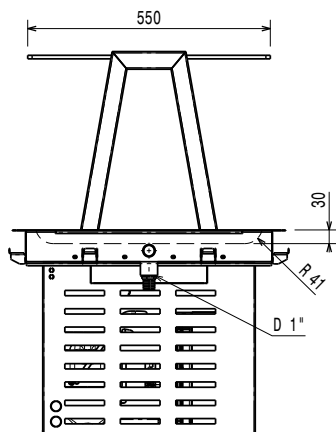
**Electrolux**  
PROFESSIONAL

## Drop-In Drop-in refrigerated stainless steel surface (2 GN container capacity) with A overself

Front

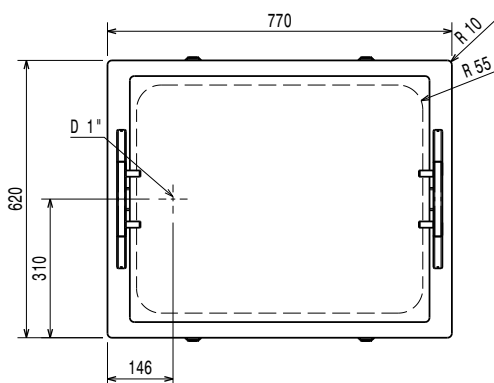


Side



EI = Electrical inlet (power)

Top



### Electric

Supply voltage: 220-240 V/1N ph/50 Hz  
Electrical power, max: 0.47 kW

### Water:

Water drain outlet size:

### Key Information:

External dimensions, Width: 770 mm  
External dimensions, Depth: 620 mm  
External dimensions, Height: 794 mm  
Net weight: 50.76 kg  
Shipping weight: 74 kg  
Shipping height: 1060 mm  
Shipping width: 660 mm  
Shipping depth: 810 mm  
Shipping volume: 0.57 m<sup>3</sup>  
Set temperature: -10 / 0 °C  
Top temperature: -10 / 0 °C

### Refrigeration Data

Refrigerant type: R290

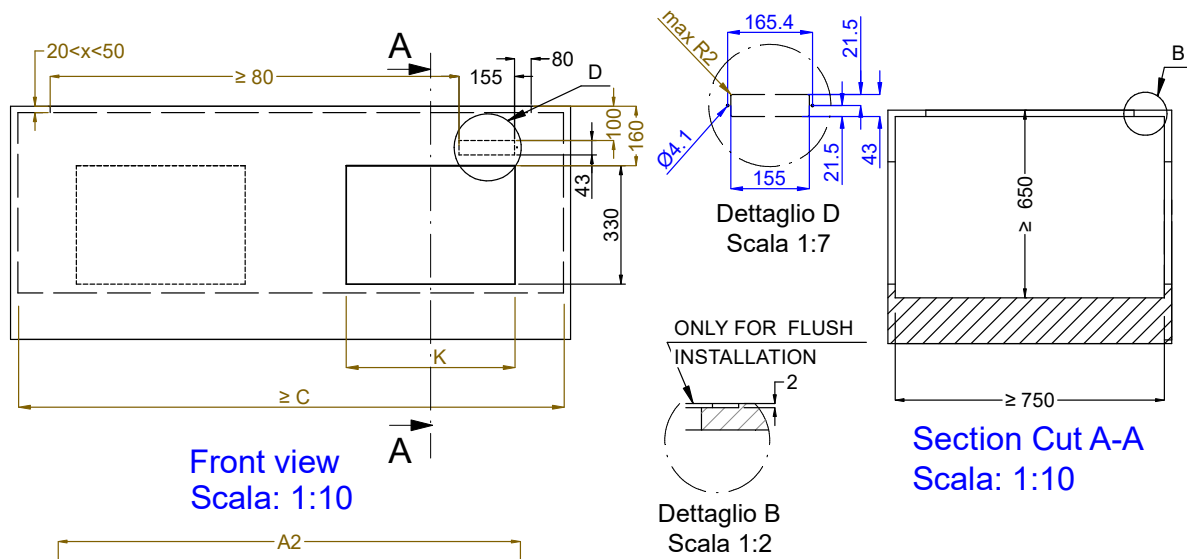
### Sustainability

Noise level: 58,8 dBA

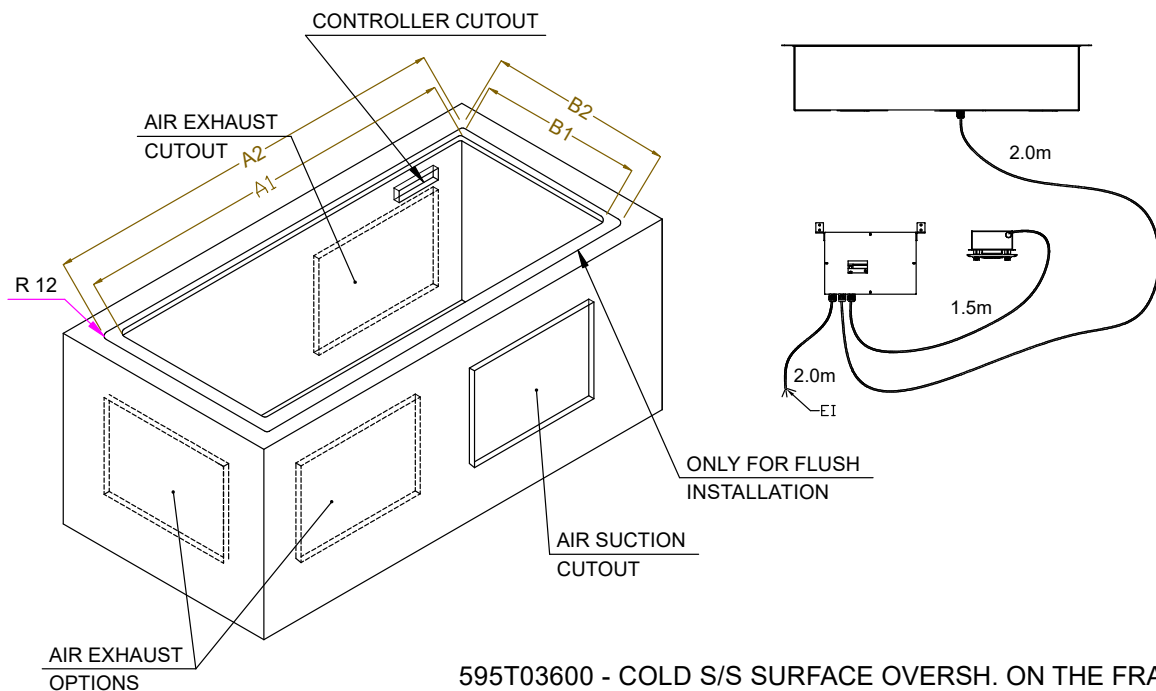


Drop-In  
Drop-in refrigerated stainless steel surface (2 GN container capacity)  
with A overself  
The company reserves the right to make modifications to the products  
without prior notice. All information correct at time of printing.

2026.02.06



| CAPACITY | CUTOUT |     | LOWERING<br>FOR FLUSH<br>INSTALLATION |     | C    | K   |
|----------|--------|-----|---------------------------------------|-----|------|-----|
|          | A1     | B1  | A2                                    | B2  |      |     |
| 2GN      | 740    | 580 | 774                                   | 624 | 870  | 470 |
| 3GN      | 1070   |     | 1104                                  |     | 1200 |     |
| 4GN      | 1390   |     | 1424                                  |     | 1520 |     |



595T03600 - COLD S/S SURFACE OVERSH. ON THE FRAME